

KICKER®

48KMA800.1

1x800w Weather-Resistant Mono Sub Amp; RoHS Compliant

Specifications

Electrical Parameters

Power (@14.4V, <1%THD+N)	4Ω	300W x 1
Power (@14.4V, <1%THD+N)	2Ω	600W x 1
Power (@14.4V, <1%THD+N)	1Ω	800W x 1
Dynamic Power (@14.4V, <10%THD+N)	1Ω	1200W
Lowest Rated Impedance		1Ω
Signal to Noise Ratio (CEA)	1W	>-75dB
Signal to Noise Ratio	Rated Power	>-95dB
CMRR	50Hz	-40dB
Input Impedance		>20kΩ
Frequency Response		25Hz - 200Hz
Variable LoPass Filter	12dB / Octave BW	50Hz - 200Hz
Fixed Subsonic Filter	24dB / Octave BW	25Hz
KickeQ™ Variable Bass Boost	40Hz	0dB - 6dB
Standby Current (Remote Off)		<2mA
Idle Current (Remote On)		<3A
Current Draw (Rated Power)		<100A
Remote Gain Attenuation		-26dB - 0dB
Low Level Input Sensitivity		125mV - 5V
High Level Input Sensitivity		250mV - 10V
Under Voltage Protection		10V
Over Voltage Protection		16V

What's in the box?

48KMA800.1
KICKER® Power Chart
KMA Mono Customer Information Card
Birth Certificate
Hardware Pack - 3mm Hex Key, and Stainless-Steel Mounting Hardware
48KMBLC Bass Remote with Cable

Physical Materials

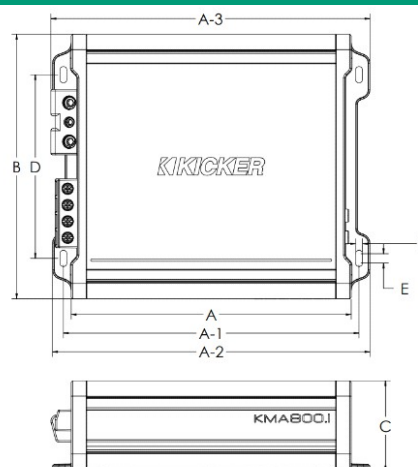
Heat Sink	UV Treated Anodized Extruded Aluminum
End Plate	Powder Coated Stamped Aluminum
End Plate Trim	Painted Injection Molded ABS Plastic
Bottom Plate	Powder Coated Stamped Aluminum



Features

- KICKER Real Marine™ Designed for Marine Environments
- Variable Active Crossover for Ideal Speaker Matching
- KickeQ™ Bass Boost for Additional Low Frequencies
- Conformal Coated Printed Circuit Board
- UV Treated Aluminum Chassis
- ABYC/NMMA - Compliant Power Terminals
- Subsonic Filter for Subwoofer Protection

Unit Dimensions

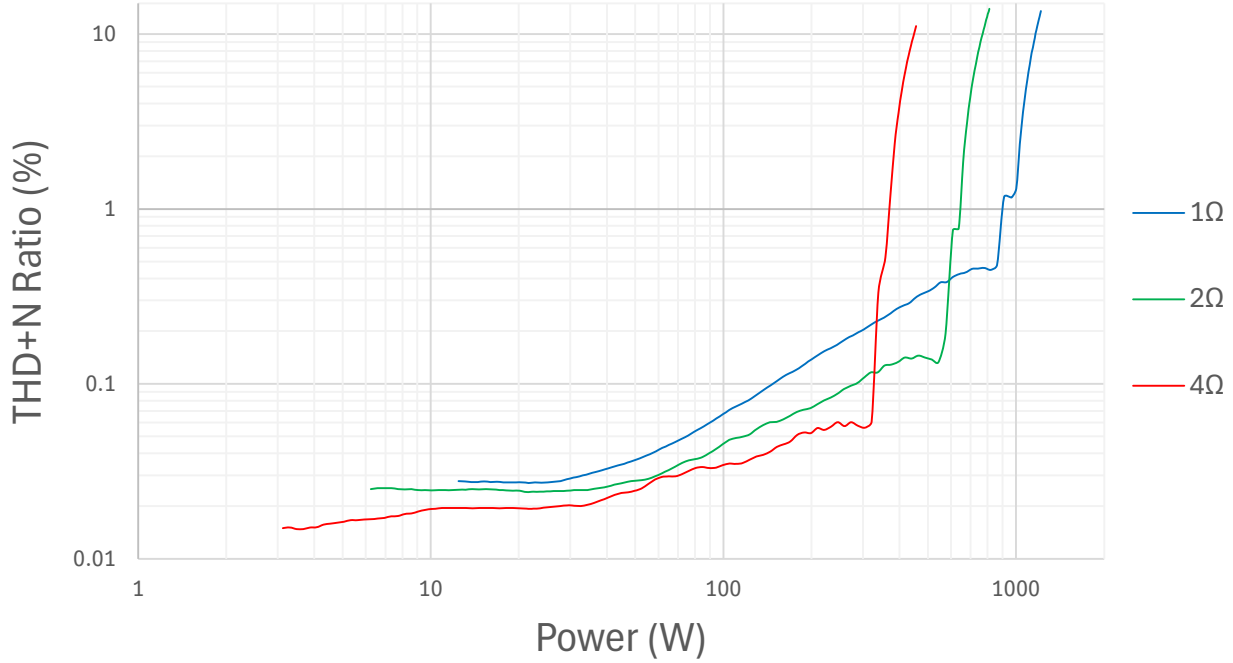


A - Chassis Length	7-3/32"	180.0mm
A-1 - Mounting Holes Location - Length	7-15/32"	190.0mm
A-2 - Overall Length	8-1/32"	204.0mm
A-3 - Overall Length with Power Terminals	8-1/16"	205.0mm
B - Overall Width	6-11/16"	170mm
C - Overall Height	2-9/32"	58.0mm
D - Mounting Holes Location - Width	4-21/32"	118.0mm
E - Mounting Holes Diameter	1/4"	6.0mm
F - Mounting Holes Width	3/16"	4.5mm

Technical Graph Data

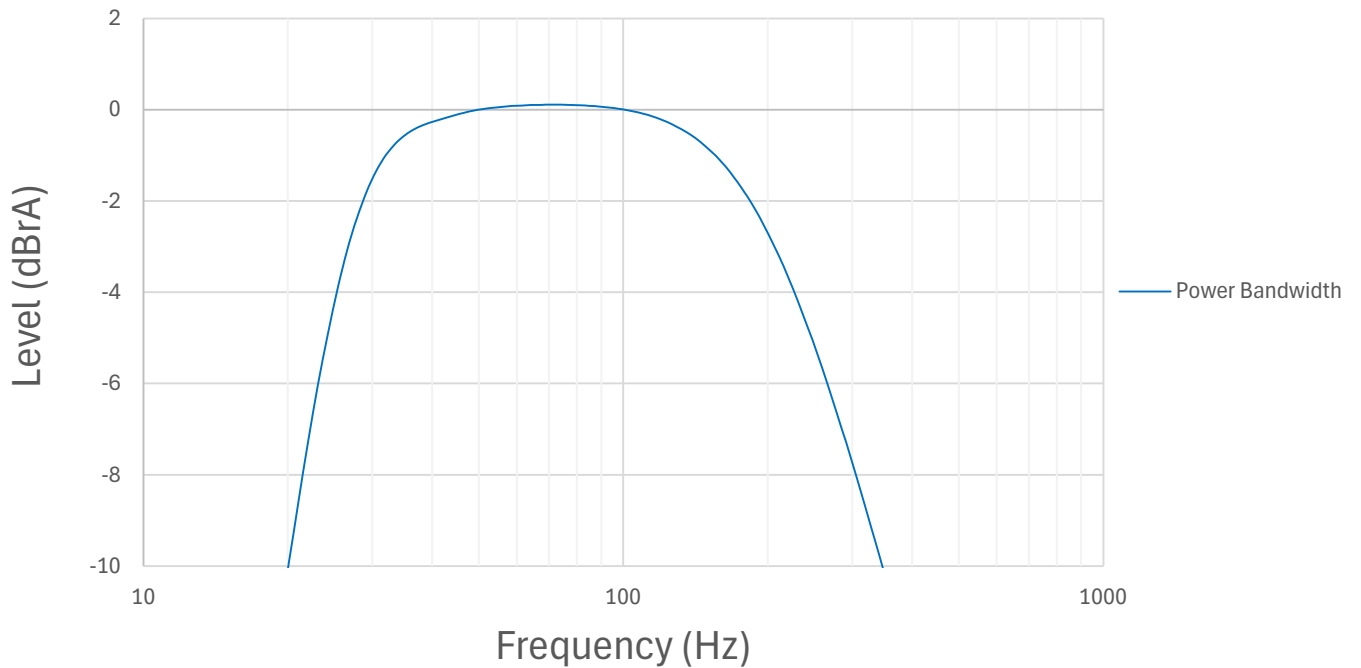
THD+N vs. Power (W) @14.4VDC

THD+N Ratio (%) vs. Power (W)



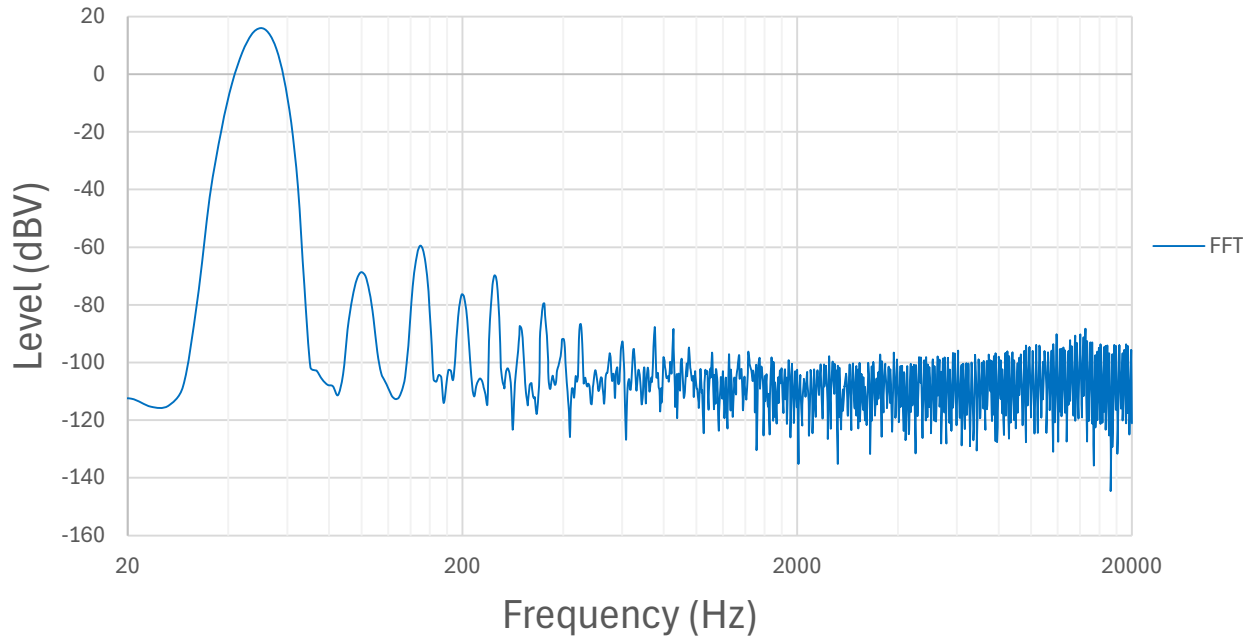
Power Bandwidth (4Ω) @14.4VDC

Power Bandwidth, re: Rated Power (300W @ 4Ω)



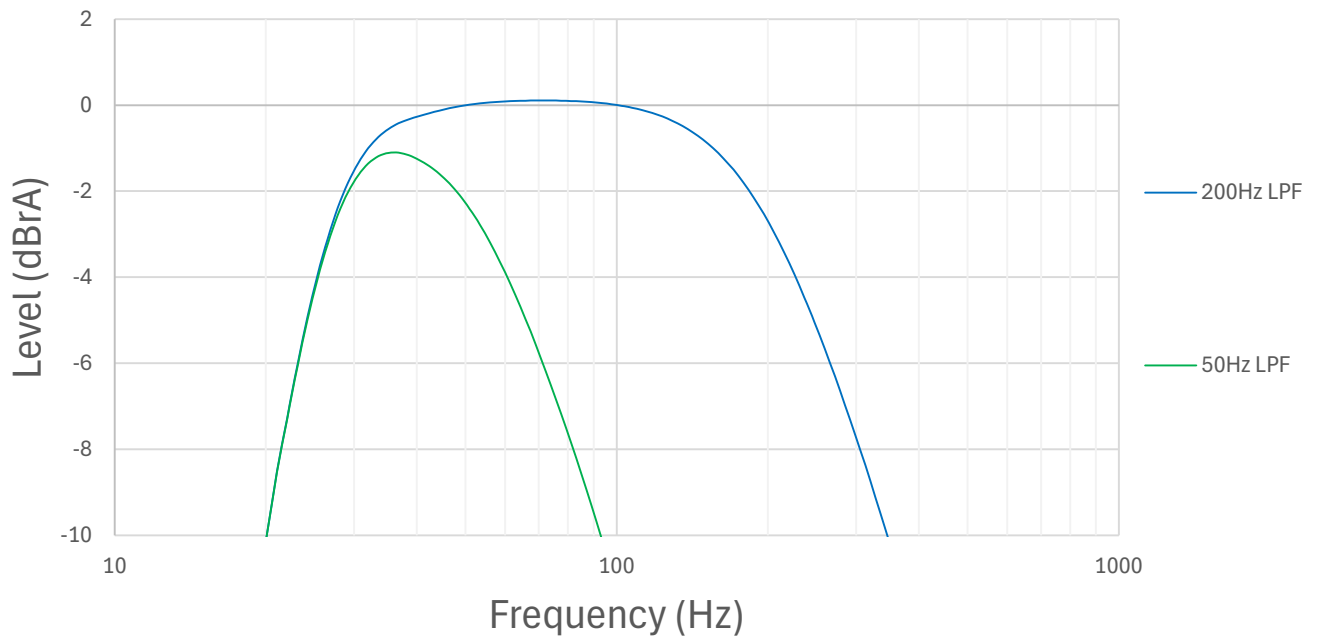
FFT

FFT (50Hz Signal)



Crossover Frequency Response

Crossover Frequency Response



KickEQ™

